

Westwood Baptist added 9,400 sq. ft. of classrooms in just a few months. Here's how we do it for churches all over the South...



STEP 1: Poured concrete footings are being installed by Rose at the same time the building is being built at our large climate controlled factory. The site is prepared to receive the modules.



STEP 2: When the completed modules arrive on site from the factory, they are parked over the footings, then precisely maneuvered into place by the setup crew using a Translift. This process repeats until all 10 modules have arrived at the site.



STEP 3: All modules are assembled, leveled, then securely anchored and bolted together to resist wind loads from 130 mph to over 150 mph in hurricane coastal zones. Transport gear is removed to be returned to the factory.



STEP 4: After all 10 modules have been assembled (this took 5 days) the building functions as one large 9,400 sq ft building instead of 10 individual modules. The interior and exterior finish work begins. Utilities are connected at this stage.



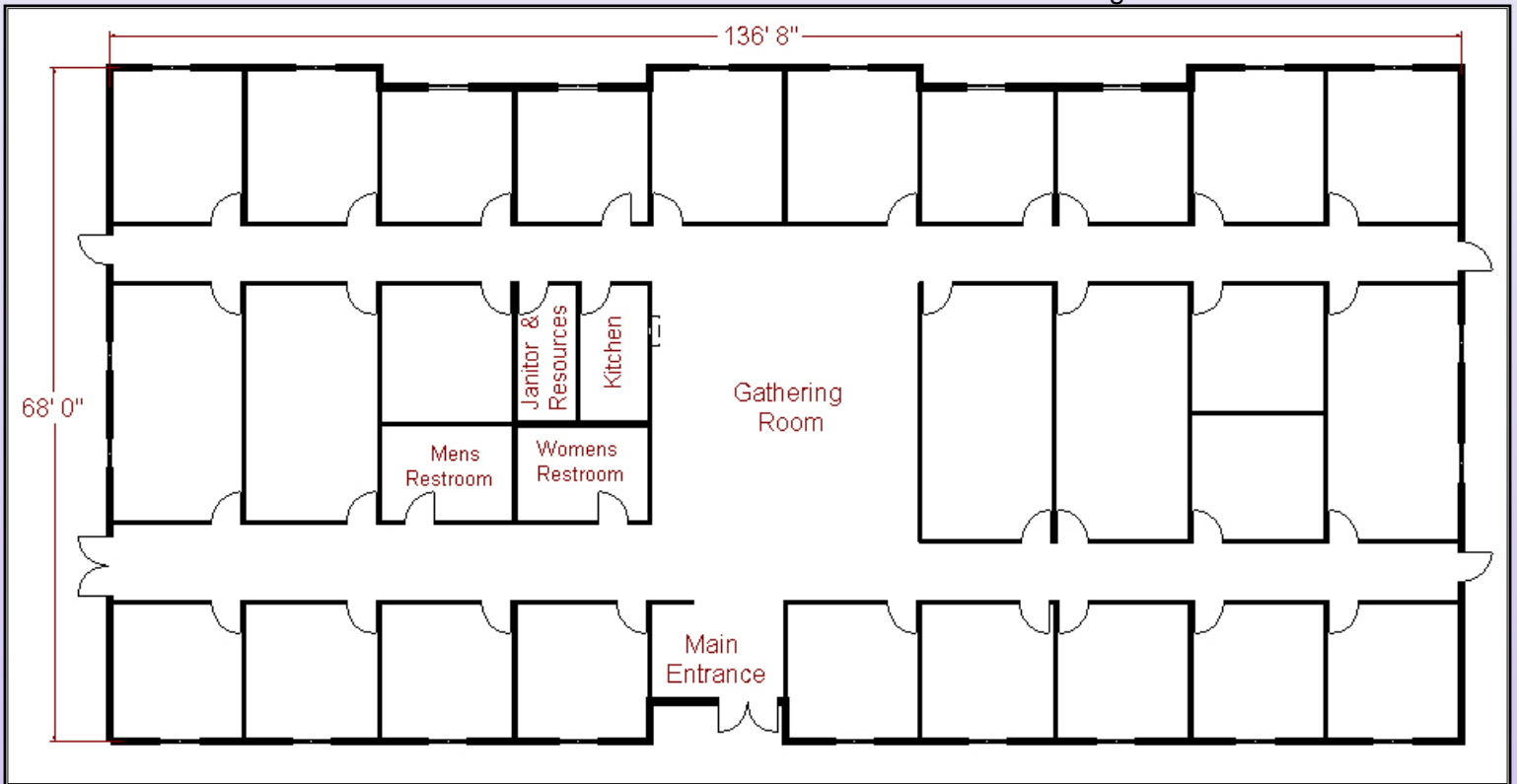
STEP 5: Special fiber-cement siding (with 30 year warranty) is being installed to give the building exterior an architectural sandstone block appearance. This siding comes in a variety of finishes for a masonry look without the high cost. At the same time, the interior is being finished, painted, and carpeted.



STEP 6: Once the siding and base is covered with the fiber-cement siding, a coping band is installed around the roof line to finish the exterior. This building has all the curb appeal and quality that you would find in a contractor built building, yet at a fraction of the cost. Normal completion time averages 90 to 120 days from starting. Also, it is expandable for future growth.



The interior is finished with painted drywall and a recessed edge T-Grid ceiling. All doors are heavy duty 20 minute fire rated with glass view panes into classrooms. Floor coverings are installed on site. The finished product looks and functions just like a "stick-built" building from a commercial contractor.



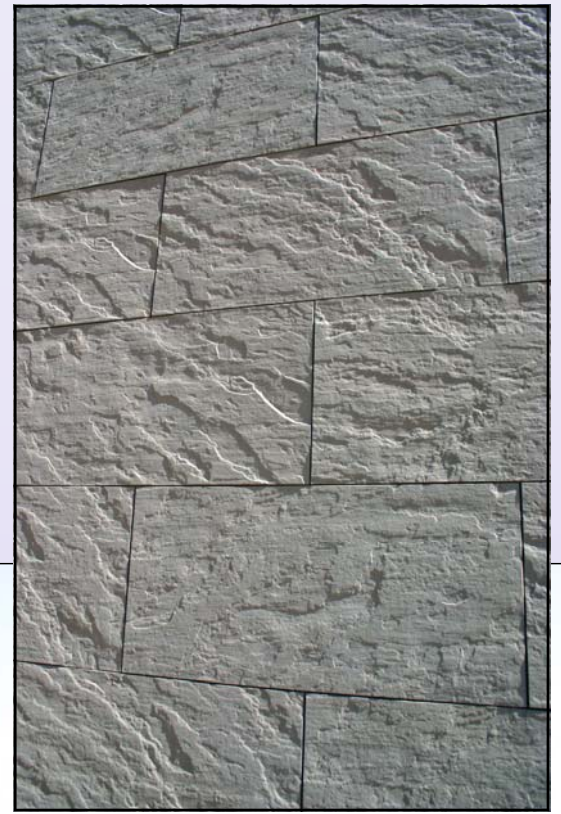
The large central "Gathering Room" can be used for meetings, social events or youth rallies. If your church has multiple services, it is a good place to gather and have coffee while the classrooms are occupied by the early service.

Your congregation will enjoy many years of use from this "built-to-last" hybrid modular building while **saving hundreds of thousands of dollars.**

Call us today to see many other floor plans from 1,000 square feet up to multiple thousand square foot complexes.

(888) 608-1173

www.RoseOffices.com



The completed 9,400 s/f hybrid modular classroom building from Rose Office Systems, Inc. Why settle for modular buildings from others that can ruin your beautiful campus with a trailer park look when you can have this?

Close up of the "Sandstone" Fiber-Cement siding material. It is incredibly realistic to both sight and touch. With a 30 year warranty, it is the newest innovation in today's modern building materials.



Depending on your site conditions, we can work with you to have ground level walk-in entrances as shown here by the use of short retaining walls and concrete landings. These types of entrances eliminate the need for unsightly wood ramps and decks used on most modular buildings. This entrance is handicap accessible and very convenient for your elderly church members. A local concrete contractor poured this concrete pad after the building was installed by ROSE.