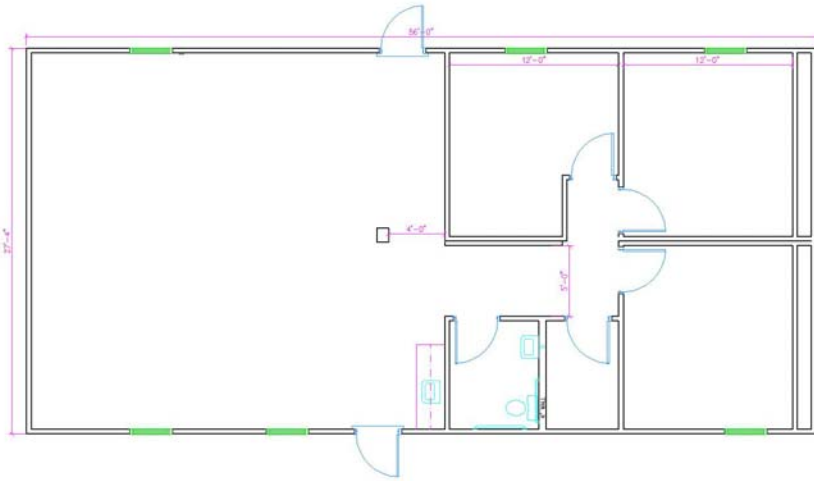


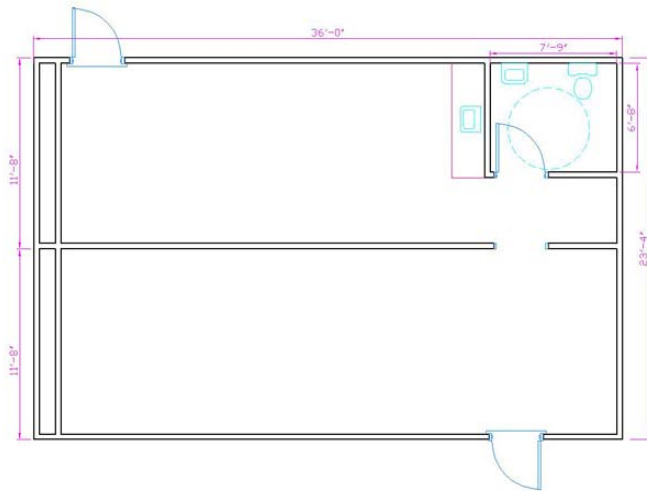
*The* **ALLENDALE II**



**Size 28x56 1,568 sq. ft. (SN 1331)**

- Three large private offices or classrooms
- Large open work areas for cubicles or classrooms
- Storage, restroom and a coffee bar

*The* **TULANE**

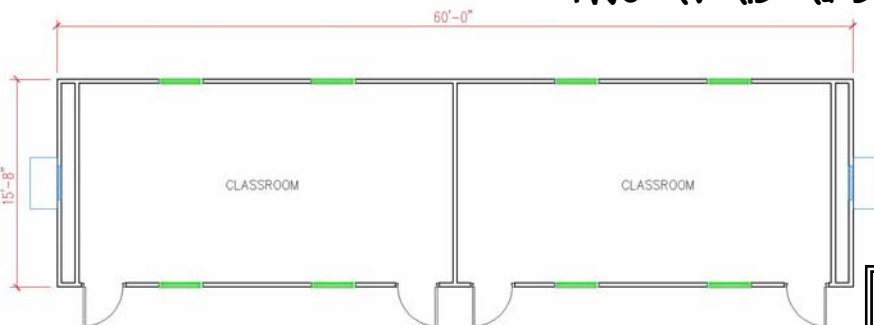


**Size: 24x36 864 sq. ft. (SN28706)**

- Two large open classroom areas
- Each classroom has private exterior door
- One restroom and a coffee bar with sink

*The* **ALTADENA**

**TWO AVAILABLE!**

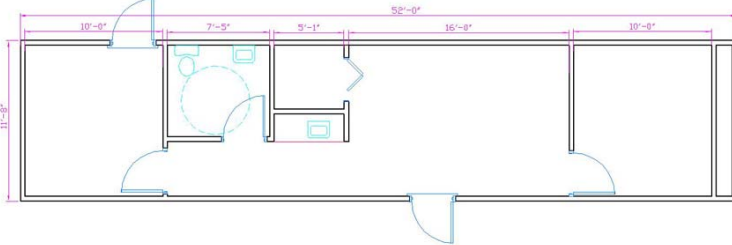


**Size: 16 x 60 960 sq. ft.**  
**(SN 2420 / 2744)**

- Two large open classrooms
- Large 36" x 54" windows
- Size: 16x60 960 sq. ft.

Call today for more info  
**(877) 767-3284**

## The ADAMS



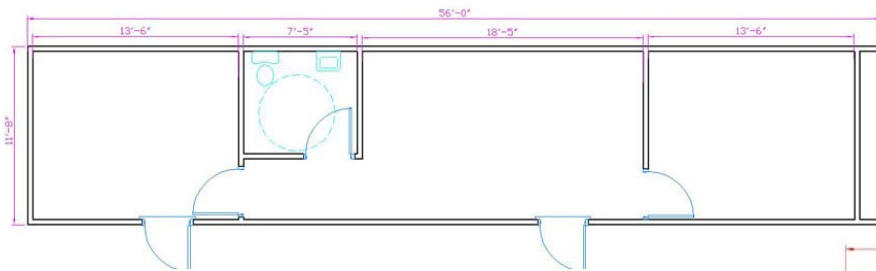
NOTE: ALL DIMENSIONS AND SIZES ARE APPROXIMATE AND MAY NOT ACCURATELY REPRESENT THE BUILDING AS SHOWN. Any furniture or appliances shown are intended for scale purposes only and are not included with the building pricing. Specifications and designs may vary according to state building codes. Prices are subject to change contingent on code variances.

<b>ROSE BUILDING SYSTEMS</b> (888) 608-1173   <a href="http://www.RoseOffices.com">www.RoseOffices.com</a>	<b>MODEL NAME</b> THE ADAMS	<b>SIZE</b> 11'-8" x 52'-0"	<b>APPROX. SQUARE FEET</b> 624 +/- 50 FT
	<b>OCCUPANCY</b> CONSTRUCTION		<b>STATE SEALS:</b> AL/ GA/ MS



**Size: 12 x 52 624 sq. ft.**

- Two offices with French glass doors
- One ADA restroom
- Coffee bar with sink
- Open work area/ central receptionist



**Restroom Trailer Available!**

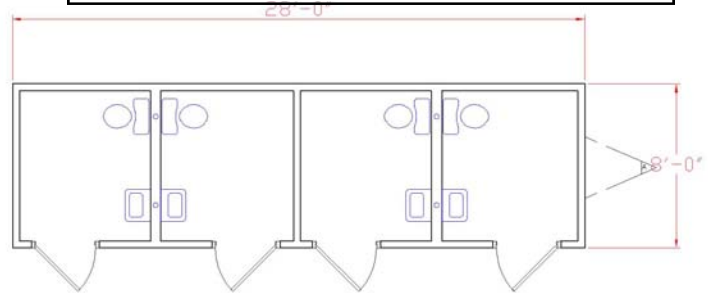
**Size: 8 x 28 224 sq. ft.**

- Four private restroom with exterior doors

**Size: 12 x 42 504 sq. ft.**

**Size: 14 x 60 840 sq. ft.**

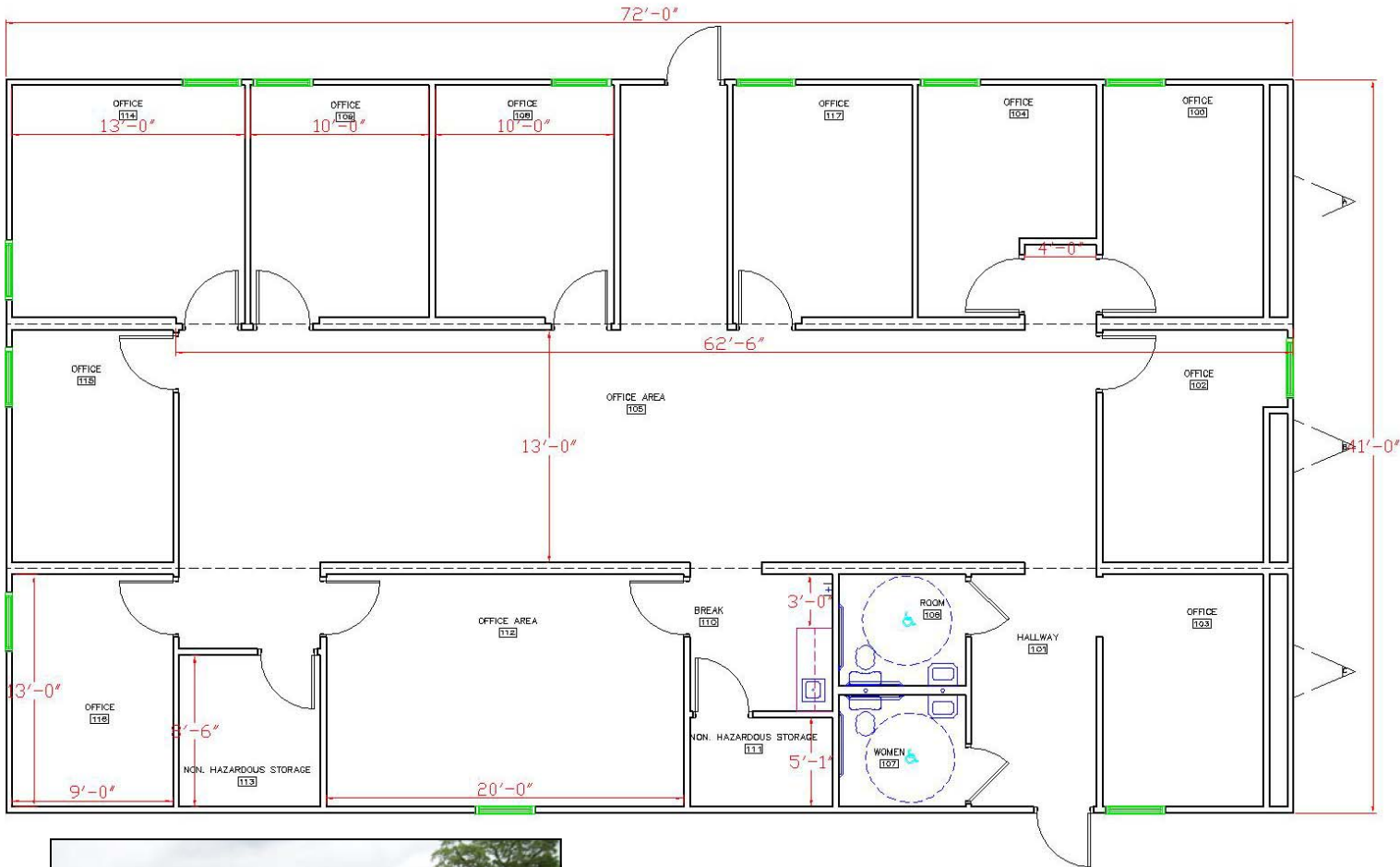
- Two corner offices with open area in middle for receptionist or conference table
- One restroom



**SPACE AVAILABLE NOW! (877) 767-3284**

Very affordable modular solutions to fill your space needs.

**THE GULFPORT ( REFERENCE SN 33416 A-C)**  
**41' x 72' 2,952 SQUARE FEET**



**Size: 41 x 72 2,952 sq. ft.**  
**(SN 33416 A-C)**

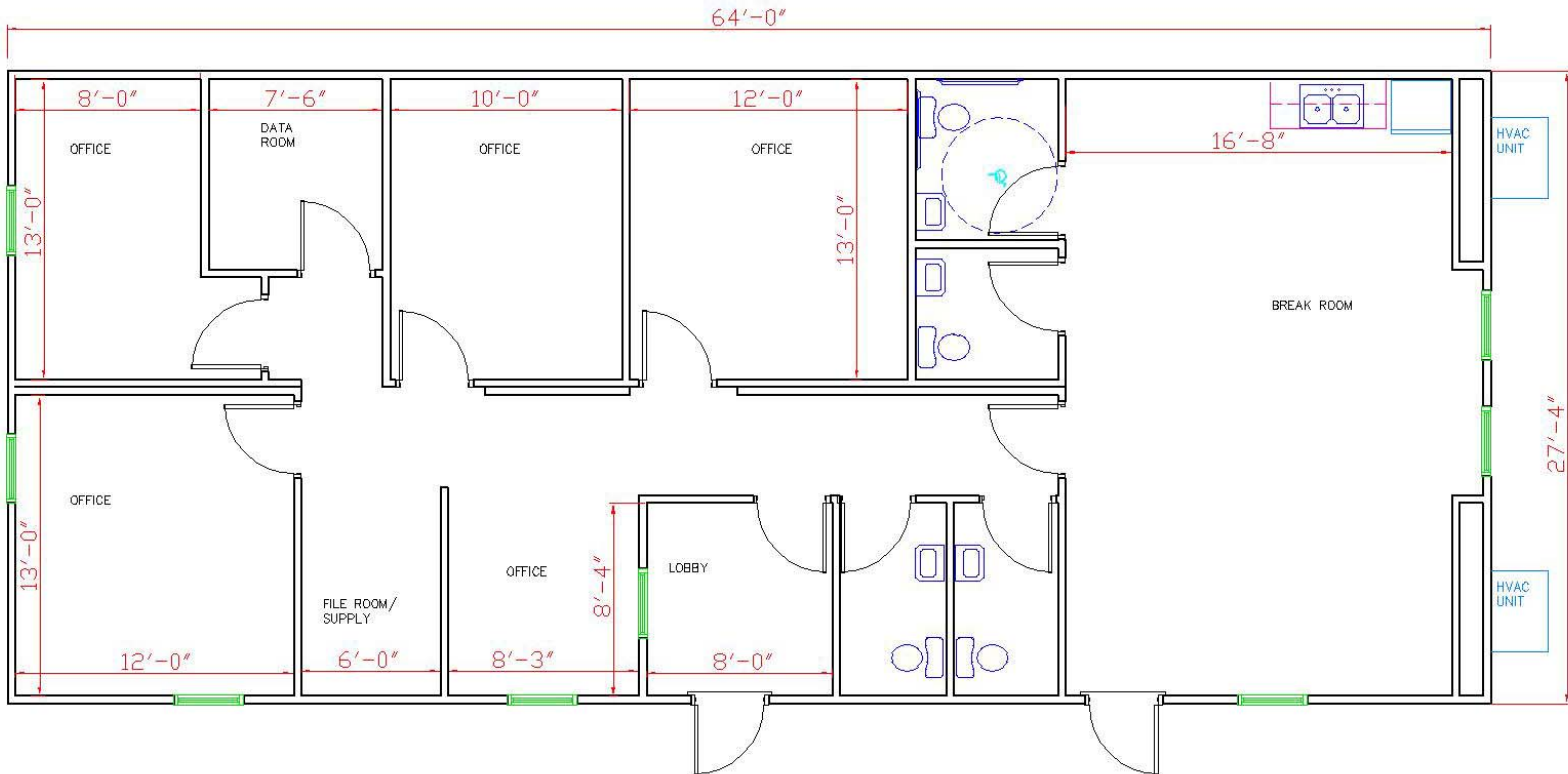
- Pre-leased building built in 2007
- Ten large offices or classrooms
- One extra large classroom/ conference
- Two private ADA restrooms
- Coffee bar with sink
- HUGE open area in center for fellowship
- Hardipanel siding material
- Carpeting and tile floors

**SPACE AVAILABLE IMMEDIATELY—MAY 2011**

Very affordable modular solutions to fill your space needs.



**THE BIRMINGHAM (SN34877)**  
28' x 64' 1,792 SQUARE FEET



**MAY 2011**

**SPACE AVAILABLE IMMEDIATELY!**



**Size: 28 x 64 1,792 sq. ft. (SN34877)**

- Brand new building built in 2011
- Four private offices or classrooms
- Receptionist area with interior windows in lobby
- One extra large classroom/ break room
- Coffee bar with sink
- Four private restrooms (ADA accessibility included)



**Very affordable modular solutions to fill your space needs.**

ROSE OFFICE SYSTEMS, INC.

Commercial Modular Buildings

Phone: (877) ROSE-BUILD (877) 767-3284

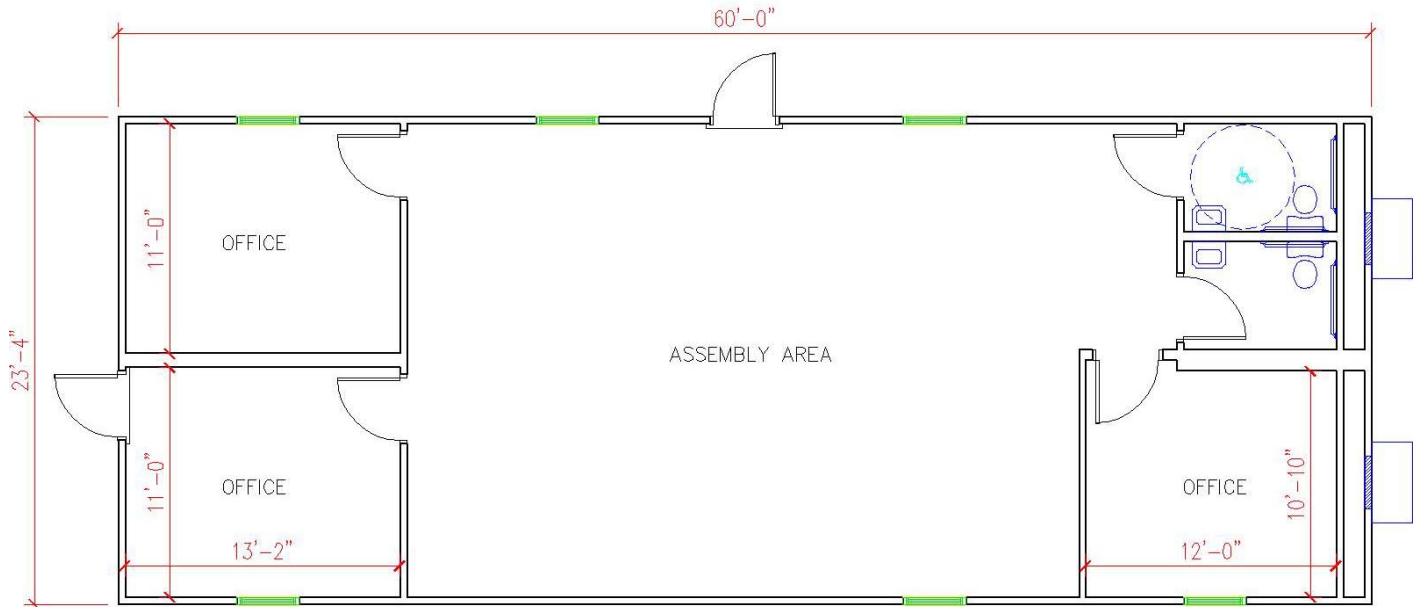
Website: [www.RoseOffices.com](http://www.RoseOffices.com)

Email: [garry@roseoffices.com](mailto:garry@roseoffices.com)

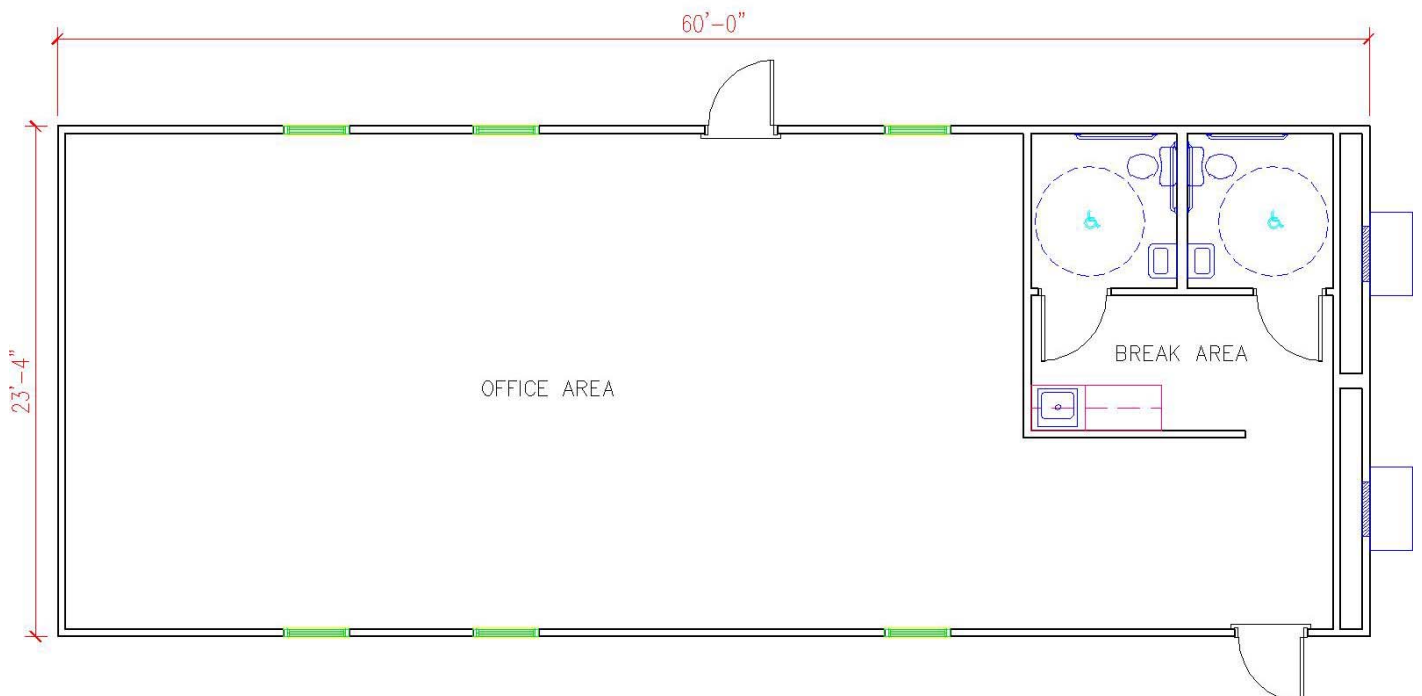


New Buildings  
**AVAILABLE NOW**  
**MAY 2011**

**THE CHOCTAW 24' x 60'**  
**(1,440 SQUARE FEET) ALA BUSINESS CODED**



**THE STOCKTON 24' x 60'**  
**(1,440 SQUARE FEET) ALA BUSINESS CODED**



Call today for more info  
**(877) 767-3284**

Visit our website at  
[www.RoseOffices.com](http://www.RoseOffices.com)

ROSE OFFICE SYSTEMS, INC.

Commercial Modular Buildings

Phone: (877) ROSE-BUILD (877) 767-3284

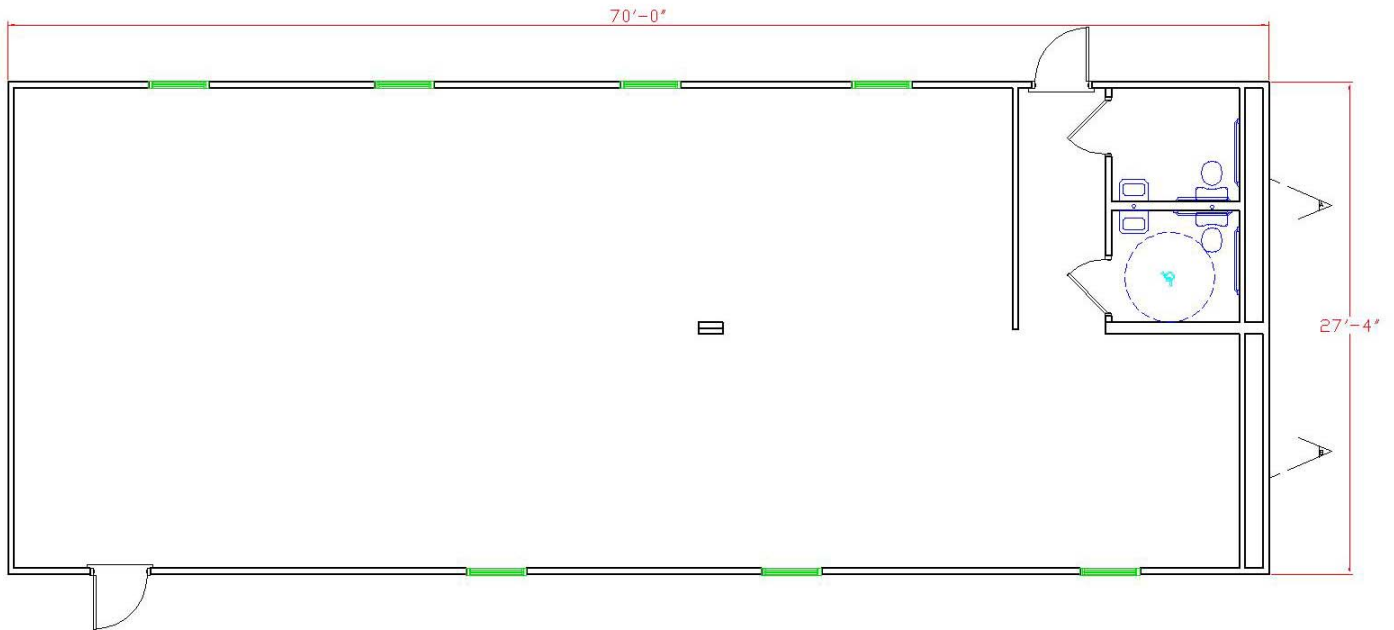
Website: [www.RoseOffices.com](http://www.RoseOffices.com)

Email: [garry@roseoffices.com](mailto:garry@roseoffices.com)

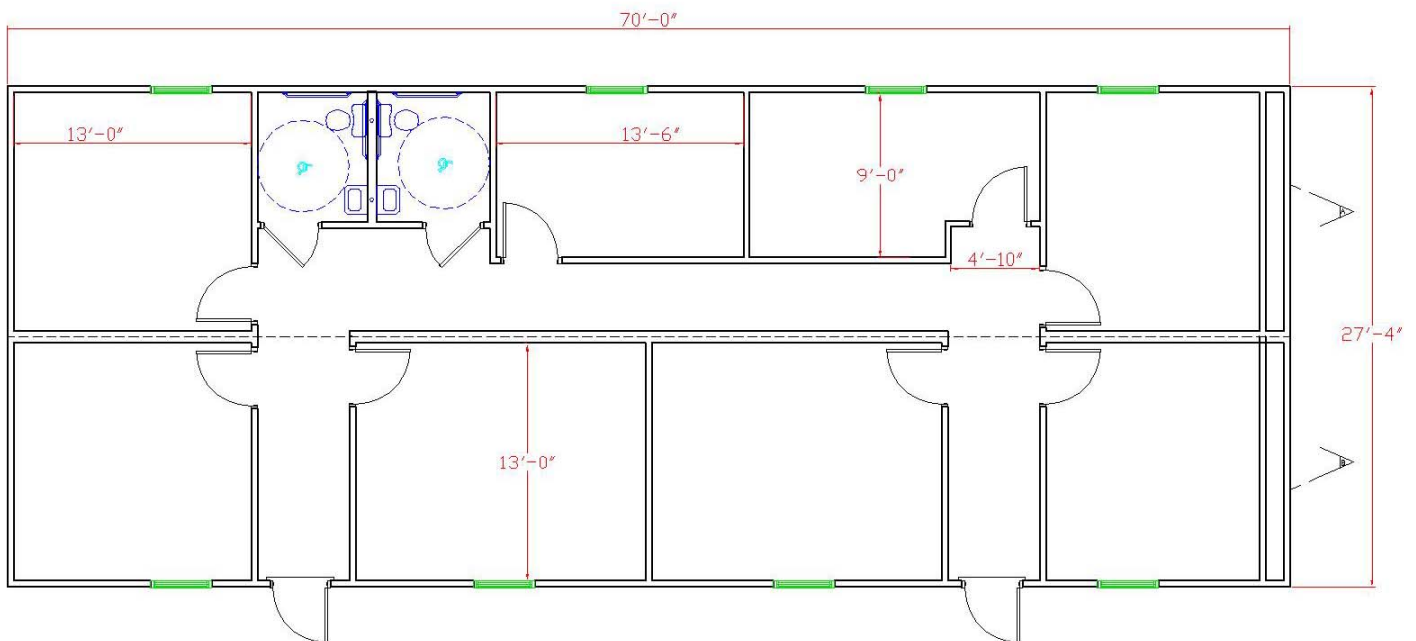


New Buildings  
**AVAILABLE NOW**  
**MAY 2011**

THE JAMISON 28' x 70'  
(1,960 SQUARE FEET) ALABAMA CODED



THE JEFFERSON 28' x 70'  
(1,960 SQUARE FEET) ALABAMA CODED



Call today for more info  
(877) 767-3284

Visit our website at  
[www.RoseOffices.com](http://www.RoseOffices.com)